

## RG174 Coaxial Cable, BNC Male / Male, 4.0 ft


### Features for this product

- 50 Ohm RF (Radio Frequency) transmission
- Molded strain relief enhances durability
- Small diameter cable provides greater flexibility
- Nickel plated body enhances corrosion resistance
- Available from stock in 12 lengths ranging from 1 to 25 feet



These versatile 50 Ohm BNC plug coaxial cable assemblies feature fully molded strain reliefs and nickel plated bodies for a cable assembly that can withstand harsh conditions. Gold plated center contacts help minimize attenuation and provide corrosion resistance. These cable assemblies are stocked in 12 standard lengths from 1 to 25 feet to satisfy your immediate needs.

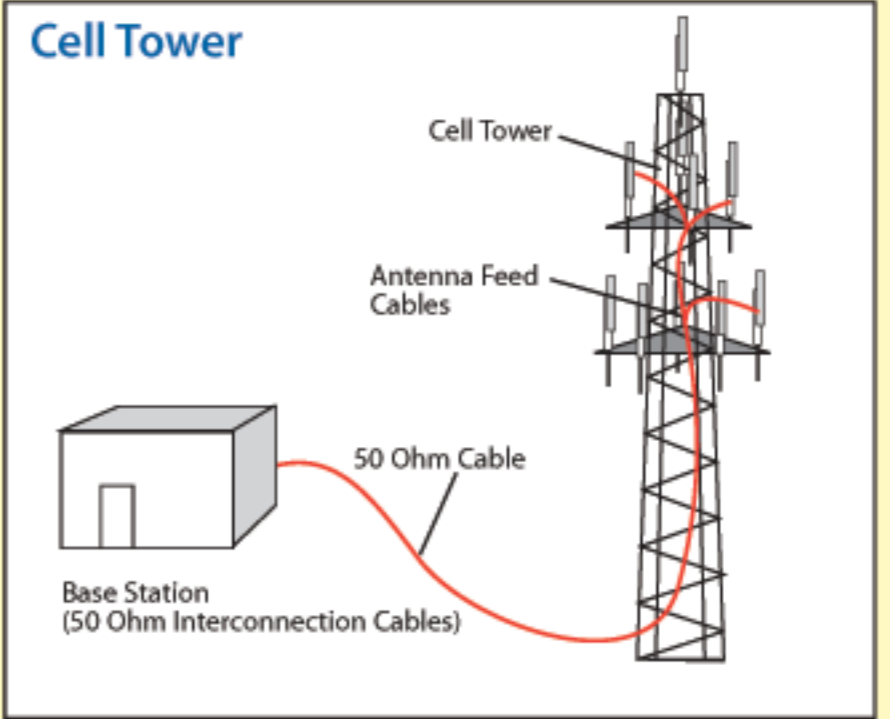
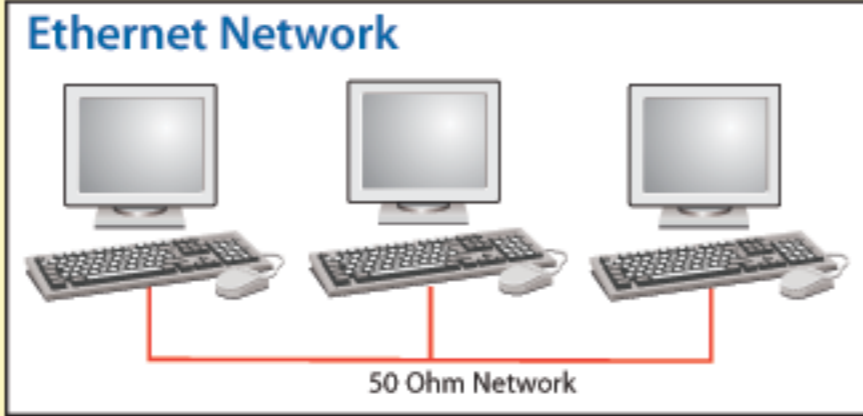
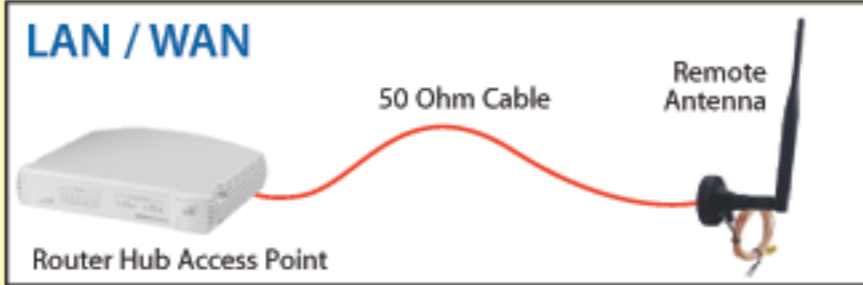
### Details for this Coaxial product

L-com Item #	CC174-4
Manufacturer	L-com
UPC #	822335004283
RoHS Status	<a href="#">Partially RoHS Compliant Stock</a> 



**Tip** *When is 50 Ohm coaxial cable used?*

The primary use of a 50 Ohm coaxial cable is transmission of a data signal in a two-way communication system. Some common applications for 50 Ohm coaxial cable are computer Ethernet backbones, wireless antenna feed cables, GPS (Global Positioning Satellite) antenna feed cables and cell phone systems. The cable assemblies offered in this section cover the most common RG style cables and connector interfaces that are used in these applications.



**New**

**Item # Description**  
**RG174/U - 50 Ohm Coaxial Cables with SMA and BNC Connectors and Molded Strain Relief Boots**

L-com now offers 50 Ohm, SMA RG174/U coaxial cable assemblies with rugged molded strain relief boots that protect against severe cable bends at the cable/connector egress point. This new L-com exclusive RG174/U molded boot design is a hard to find feature that most coaxial cable manufacturers do not offer. Additionally, L-com stocks 10 standard lengths from .5 to 10 ft ready for immediate delivery.

RG174/U		NOMINAL ATTENUATION		
		MHz	db/100 ft	db/100m
		50	5.8	19.0
		100	8.4	27.6
		200	12.5	41.0
		400	19.0	62.3
		1000	34.0	111.5

**RG174/U - 50 Ohm Coaxial Cables with Two Inline SMA Plugs and Molded Strain Relief Boots**

<a href="#">CC174S-05</a>	RG174 Cable, SMA Male / Male, 0.5 ft
<a href="#">CC174S-1</a>	RG174 Cable, SMA Male / Male, 1.0 ft
<a href="#">CC174S-1.5</a>	RG174 Cable, SMA Male / Male, 1.5 ft
<a href="#">CC174S-2</a>	RG174 Cable, SMA Male / Male, 2.0 ft
<a href="#">CC174S-2.5</a>	RG174 Cable, SMA Male / Male, 2.5 ft
<a href="#">CC174S-3</a>	RG174 Cable, SMA Male / Male, 3.0 ft
<a href="#">CC174S-4</a>	RG174 Cable, SMA Male / Male, 4.0 ft
<a href="#">CC174S-5</a>	RG174 Cable, SMA Male / Male, 5.0 ft
<a href="#">CC174S-7.5</a>	RG174 Cable, SMA Male / Male, 7.5 ft
<a href="#">CC174S-10</a>	RG174 Cable, SMA Male / Male, 10.0 ft

**RG174/U - 50 Ohm Coaxial Cables with Inline SMA to Right Angle SMA Plugs and Molded Strain Relief Boots**

<a href="#">CC174S-05HR</a>	RG174 Cable, SMA Male / 90° Male, 0.5 ft
<a href="#">CC174S-1HR</a>	RG174 Cable, SMA Male / 90° Male, 1.0 ft
<a href="#">CC174S-1.5HR</a>	RG174 Cable, SMA Male / 90° Male, 1.5 ft
<a href="#">CC174S-2.5HR</a>	RG174 Cable, SMA Male / 90° Male, 2.5 ft
<a href="#">CC174S-5HR</a>	RG174 Cable, SMA Male / 90° Male, 5.0 ft

**RG174/U - 50 Ohm Coaxial Cables with Two Right Angle SMA Plugs and Molded Strain Relief Boots**

<a href="#">CC174S-05HR2</a>	RG174 Cable, SMA 90° Male / 90° Male, 0.5 ft
<a href="#">CC174S-1HR2</a>	RG174 Cable, SMA 90° Male / 90° Male, 1.0 ft
<a href="#">CC174S-1.5HR2</a>	RG174 Cable, SMA 90° Male / 90° Male, 1.5 ft
<a href="#">CC174S-2.5HR2</a>	RG174 Cable, SMA 90° Male / 90° Male, 2.5 ft
<a href="#">CC174S-5HR2</a>	RG174 Cable, SMA 90° Male / 90° Male, 5.0 ft

**RG174/U - 50 Ohm Coaxial Cables with Inline SMA to Inline BNC Plugs and Molded Strain Relief Boots**

<a href="#">CC174SB-05</a>	RG174 Cable, SMA Male / BNC Male, 0.5 ft
<a href="#">CC174SB-1</a>	RG174 Cable, SMA Male / BNC Male, 1.0 ft
<a href="#">CC174SB-1.5</a>	RG174 Cable, SMA Male / BNC Male, 1.5 ft
<a href="#">CC174SB-2.5</a>	RG174 Cable, SMA Male / BNC Male, 2.5 ft
<a href="#">CC174SB-5</a>	RG174 Cable, SMA Male / BNC Male, 5.0 ft
<a href="#">CC174SB-7.5</a>	RG174 Cable, SMA Male / BNC Male, 7.5 ft
<a href="#">CC174SB-10</a>	RG174 Cable, SMA Male / BNC Male, 10.0 ft

**RG174/U - 50 Ohm Coaxial Cables with Two Inline BNC Plugs and Molded Strain Relief Boots**

<a href="#">CC174-1</a>	RG174 Cable, BNC Male / Male, 1.0 ft
<a href="#">CC174-1.5</a>	RG174 Cable, BNC Male / Male, 1.5 ft
<a href="#">CC174-2</a>	RG174 Cable, BNC Male / Male, 2.0 ft
<a href="#">CC174-2.5</a>	RG174 Cable, BNC Male / Male, 2.5 ft
<a href="#">CC174-3</a>	RG174 Cable, BNC Male / Male, 3.0 ft
<a href="#">CC174-4</a>	RG174 Cable, BNC Male / Male, 4.0 ft
<a href="#">CC174-5</a>	RG174 Cable, BNC Male / Male, 5.0 ft
<a href="#">CC174-7.5</a>	RG174 Cable, BNC Male / Male, 7.5 ft
<a href="#">CC174-10</a>	RG174 Cable, BNC Male / Male, 10.0 ft
<a href="#">CC174-12</a>	RG174 Cable, BNC Male / Male, 12.0 ft
<a href="#">CC174-15</a>	RG174 Cable, BNC Male / Male, 15.0 ft
<a href="#">CC174-25</a>	RG174 Cable, BNC Male / Male, 25.0 ft